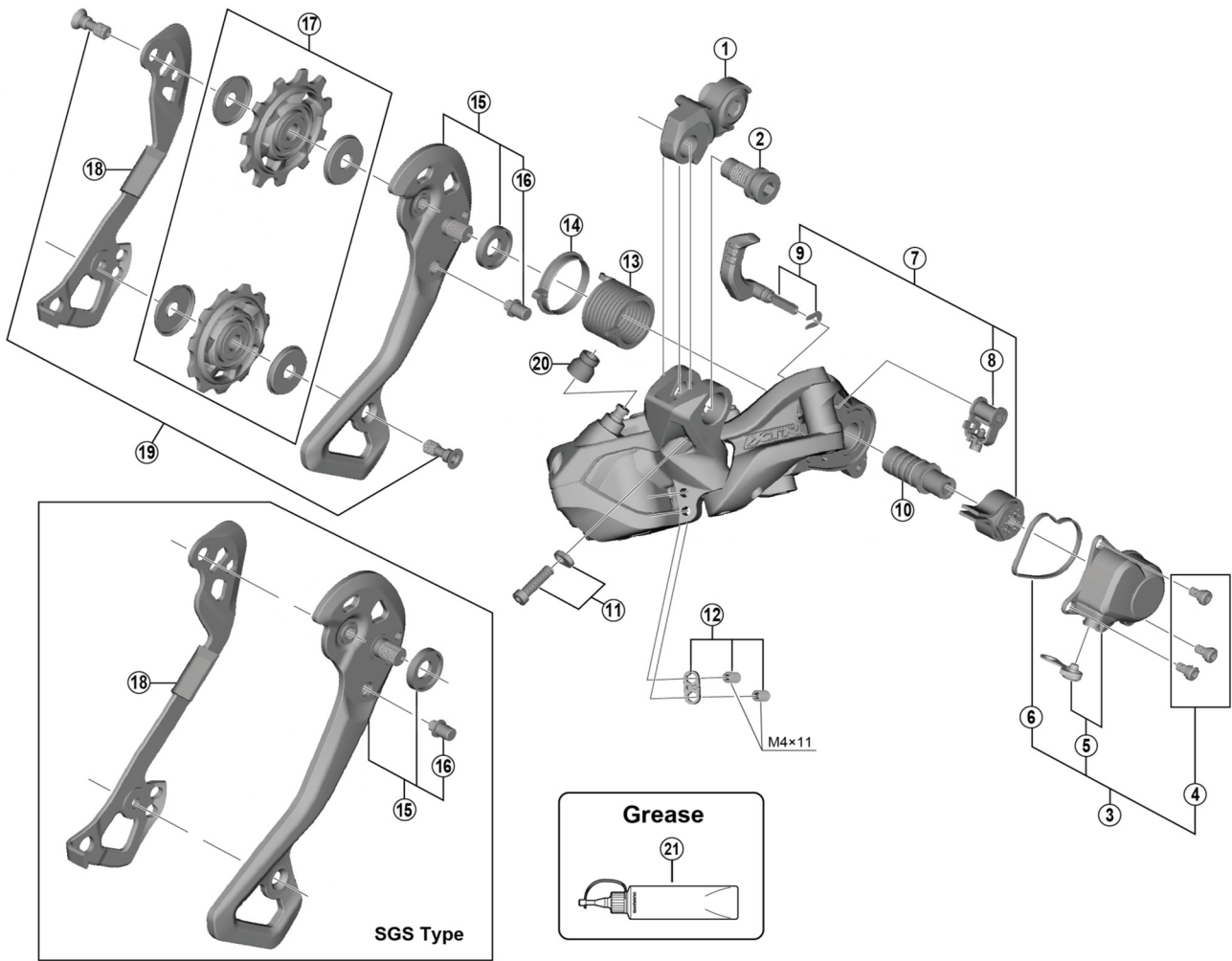


**XTR Rear Derailleur (11-speed)**  
**RD-M9050 (GS/SGS)** Long Cage/Super Long Cage



ITEM NO.	SHIMANO CODE NO.	DESCRIPTION
1	Y5PU98010	B-Axle & Adapter
2	Y5PV15000	B-Axle 2 (for Direct Mount type)
3	Y5PU98020	P-Cover Unit
4	Y5Y198070	P-Cover Bolt Set (3 pcs.)
5	Y5PU98190	P-Cover & Cap
6	Y5PU130V0	P-Cover Packing
7	Y5PU98030	Chain Stabilizer Unit
8	Y5PU98040	Cam Unit
9	Y5PU98080	Switch Lever Unit & Fixing Plate
10	Y5PU98050	P-Axle Unit
11	Y5PU98060	B-Tension Adjusting Screw (M4 x 14) & Plate
12	Y5PU98070	Stroke Adjusting Screws & Plate
13	Y5PU13100	P-Tension Spring
14	Y5PU130T0	P-Seal Ring
15	Y5PU98090	Outer Plate Assembly (GS-Type)
	Y5PU98100	Outer Plate Assembly (SGS-Type)
16	Y5X028200	Plate Stopper Pin
17	Y5PV98160	Guide & Tension Pulley Unit
18	Y5PU09100	Inner Plate (GS-Type)
	Y5PU10100	Inner Plate (SGS-Type)
19	Y5XX98130	Pulley Bolt (2 pcs.)
20	Y5PU130Y0	Boot Cover
*	Y04121000	New Grease for Stabilizer (Net. 50g)
*	Y04120800	Grease for Stabilizer (Net. 100g)

Aug.-2018-3817D  
 © Shimano Inc. I

Specifications are subject to change without notice.

**SHIMANO**